

## Middletown Recycling Center

# Recycling Regulations

Residents may bring recyclables to the Recycling Center at no charge. Residents must present their drivers license with a Middletown address to use the Recycling Center.

### Recyclables accepted free of charge:

Aluminum foil	Electronics	Mattresses and Box Springs in good condition
Antifreeze	Food Scraps	Milk & soup cartons
Brush (less than 6" in diameter; brought in by residents)	Glass & Metal Food and Beverage Containers	Mixed paper
Catalogs	Junk mail	Newspaper
Cooking Oil	Lead acid batteries	Paperboard
Corrugated Cardboard	Leaves	Pizza Box (no food)
Drink boxes		Plastic containers



The Middletown Recycling Center is located on the corner of Johnson Street and North Main Street at 185 Johnson St.

### Hours:

	<b>All year</b>	<b>Mon. – Fri.</b>	<b>7am-2:45pm</b>
	<b>Dec.-Mar., July &amp; Aug.</b>	<b>1<sup>st</sup> &amp; 3<sup>rd</sup> Sat.</b>	<b>7am-11:45am</b>
	<b>Apr.-June, Sept.-Nov.</b>	<b>Every Sat.</b>	<b>7am-11:45am</b>



### Curbside Bulk Waste Collection -

\$75 per pick up. Mattresses and box springs are an additional \$36 per item. Payment must be made to DPW prior to collection. Bulk waste is suspended Oct. 19 – Mar 1<sup>st</sup>.

### For more information...

Call Public Works at 860.638-4850

[www.MiddletownCT.Gov](http://www.MiddletownCT.Gov)

## Middletown Recycling Center

# Bulky Waste Charges

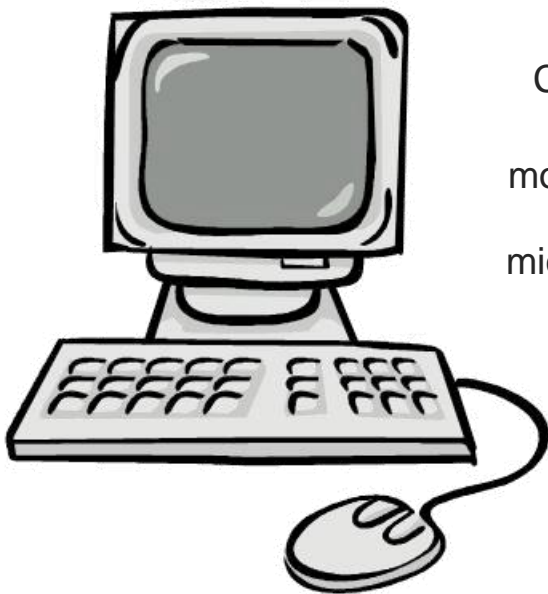
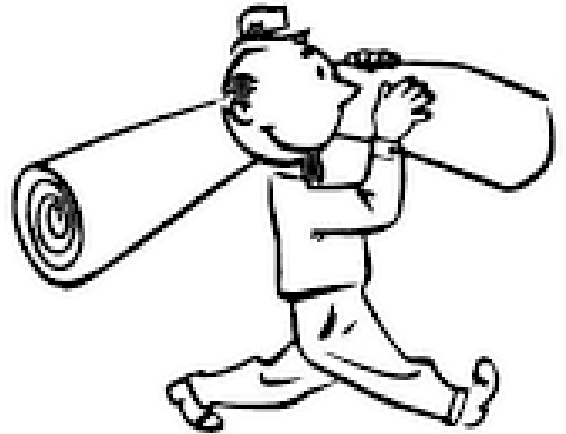
All bulky waste material which enters the Recycling Center will be weighed on a scale and charged according to tonnage.

All bulky waste material will be charged **\$115/ton** unless otherwise noted. All vehicles, including cars and SUVs will be charged.

There is a minimum charge of **\$10** for bulky waste.

### Bulky Waste Material Includes:

- Carpentry
- Demolition & construction debris
- Furniture (any furniture with bed bugs must be wrapped in plastic)
- Landscaping debris (over 6' in diameter)
- Scrap metal
- Wood
- Brush \$25/load delivered by a contractor
- Other household items:
  - Freon containing items (\$15.00 per unit)
  - Passenger tires (\$3.00 each)
  - Truck tires & tires on rims (\$10 each)



### Household Electronics

Computers, monitors, televisions & printers – FREE!

Also accepted: cell phones, copiers, Ipods, PDAs, modems & other computer peripherals, stereo & radio equipment, telephones, typewriters, speakers, microwaves, digital cameras, VCRs and DVD players.

All items accepted at NO CHARGE.

Residential items only.

Per state law, no more than seven items accepted per load.

Please place items in proper containers.

**Payments may be made on site with Visa/Mastercard or check. A payment card may be purchased at the City Hall if cash payments are preferred.**